



PNEUMATIC COUNTER with 3/2 n.c. OUTPUT



## LOGIC PNEUMATIC

**SEMAK**<sup>®</sup>**MATIC**  
PNEUMATIC EQUIPMENTS

[www.sematik.tr](http://www.sematik.tr)

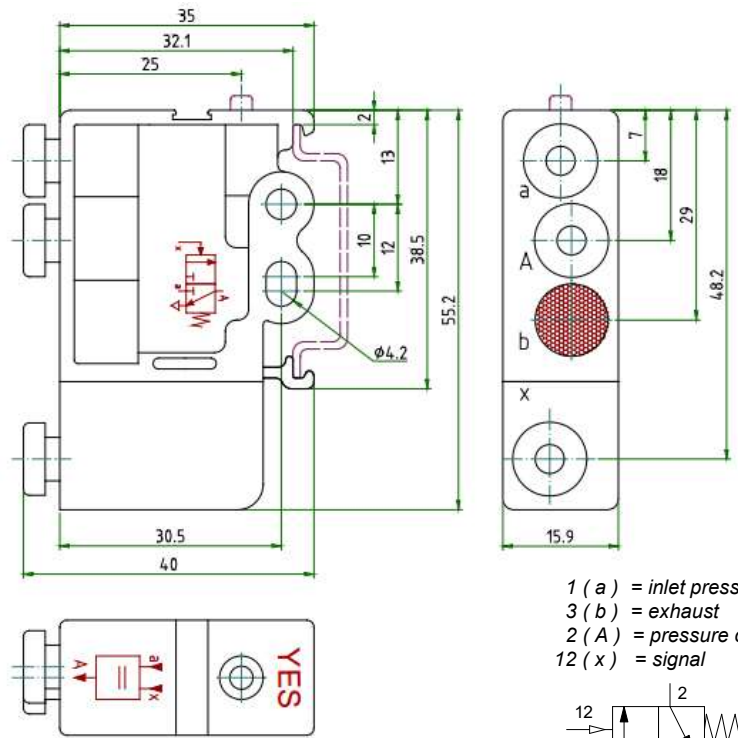
YES VALVE ( 3/2 – N.C. )



\* with 4 mm tube or M5 thread

- \* Flow rate is 100 NI / min. at 6 bar .
- \* Pressure range is from 1 bar to 8 bar.
- \* Technopolimer body.
- \* Pressure indicator with yellow color
- \* With 4 mm tube fittings or M5 thread
- \* Suitable for non oily applications

DRAWINGS



**ORDERING CODE for a VALVE**

3/2 – 4 mm or M5 spring return YES VALVE

: SMVLJ0400T00YE

\* For M5 threaded valve , please ask for the code .

Fluid	: Compressed filtered air with or without lubrication If lubrication used at ones must be continious .
Pressure range	: min.1 bar - max. 8 bar
Temperature range	: - 10 ° C / + 50 ° C
Version	: 3/2 – 4 mm N.C. spring return ( M5 threaded on request )
Materials	<ul style="list-style-type: none"> <li>Spring : Stainles steel</li> <li>Silencer : Sintered bronze</li> <li>Seals : Perbunan NBR</li> <li>Body : Pom</li> </ul>
Orifice	: 2,7 mm
Mounting	: In any position ( suitable to rail according to DIN 50022 )
Flow rate	: 100 NI/ min at 6 bar
Cycle per min.	: 180 cycle / min ( depends upon the signal inlet and outlet )
Actuating system	: Poppet

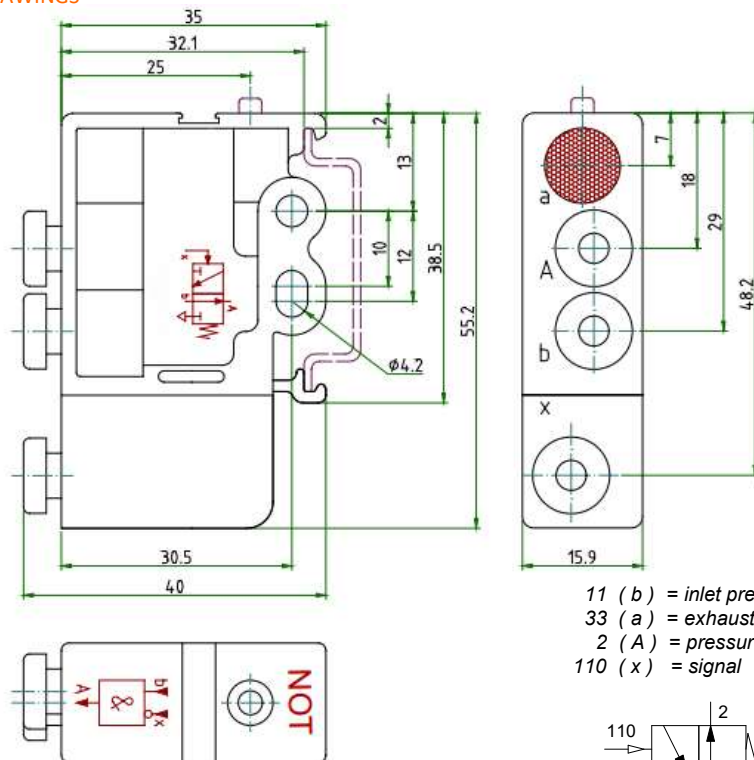
NOT VALVE ( 3/2 – N.O. )



\* with 4 mm tube or M5 thread

- \* Flow rate is 100 NI / min. at 6 bar .
- \* Pressure range is from 0,4 bar to 8 bar.
- \* Technopolimer body.
- \* Pressure indicator with yellow color
- \* With 4 mm tube fittings or M5 thread
- \* Suitable for non oily applications

DRAWINGS



11 ( b ) = inlet pressure  
 33 ( a ) = exhaust  
 2 ( A ) = pressure out  
 110 ( x ) = signal

ORDERING CODE for a VALVE

3/2 – 4 mm or M5 spring return NOT VALVE

: SMVLJ0400T00NO

\* For M5 threaded valve , please ask for the code .

Fluid	: Compressed filtered air with or without lubrication
	If lubrication used at ones must be continious .
Pressure range	: min.0,4 bar - max. 8 bar
Temperature range	: - 10 ° C / + 50 ° C
Version	: 3/2 – 4 mm N.O. spring return ( M5 threaded on request )
Materials	
Spring	: Stainles steel
Silencer	: hard aluminium anodized
Seals	: Perbunan NBR
Body	: Pom
Orifice	: 2,7 mm
Mounting	: In any position ( suitable to rail according to DIN 50022 )
Flow rate	: 100 NI/ min at 6 bar
Cycle per min.	: 180 cycle / min ( from port 2 or port 4 to neutral position )
Actuating system	: Poppet

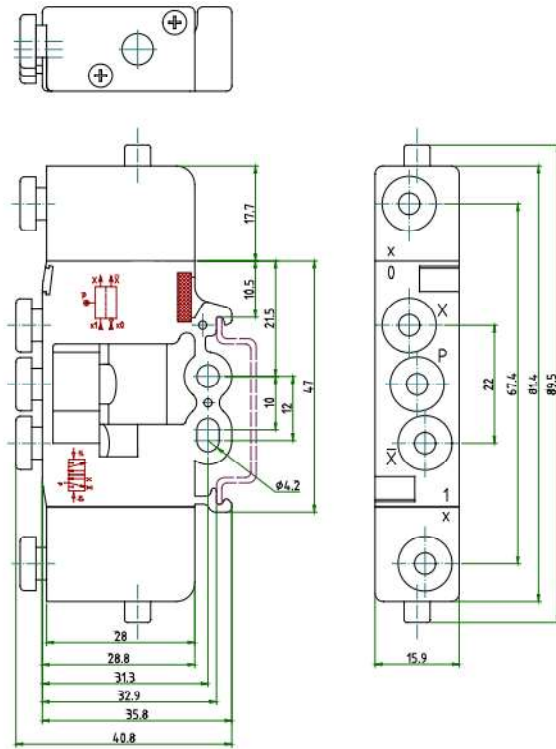
## MEMORY VALVE ( 5/2 – BISTABLE + manual reset )



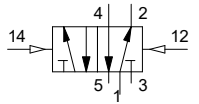
\* with 4 mm tube or M5 thread

- \* Flow rate is 100 NI / min. at 6 bar .
- \* Pressure range is from 0 bar to 8 bar.
- \* Technopolimer body.
- \* Pressure indicator with yellow color
- \* With 4 mm tube fittings or M5 thread
- \* Suitable for non oily applications

## DRAWINGS



12 (x1) = signal  
 14 (x0) = signal  
 1 (P) = pressure  
 2-4 (x) = pressure out  
 3-5 = exhaust



### ORDERING CODE for a VALVE

5/2 – 4 mm or M5 spring return MEMORY VALVE : SMVLJ0400T00ME

\* For M5 threaded valve , please ask for the code .

Fluid	: Compressed filtered air with or without lubrication If lubrication used at ones must be continious .
Pressure range	: min.0 bar - max. 8 bar
Temperature range	: - 10 ° C / + 50 ° C
Version	: 5/2 – 4 mm double pilot , bistable ( M5 threaded on request )
Materials	
Spring	: Stainles steel
Silencer	: Sintered bronze
Seals	: Perbunan NBR
Body	: Pom
Orifice	: 2,7 mm
Mounting	: In any position ( suitable to rail according to DIN 50022 )
Flow rate	: 100 NI/ min at 6 bar
Cycle per min.	: 180 cycle / min ( depends upon the signal inlet and outlet )
Actuating system	: Poppet

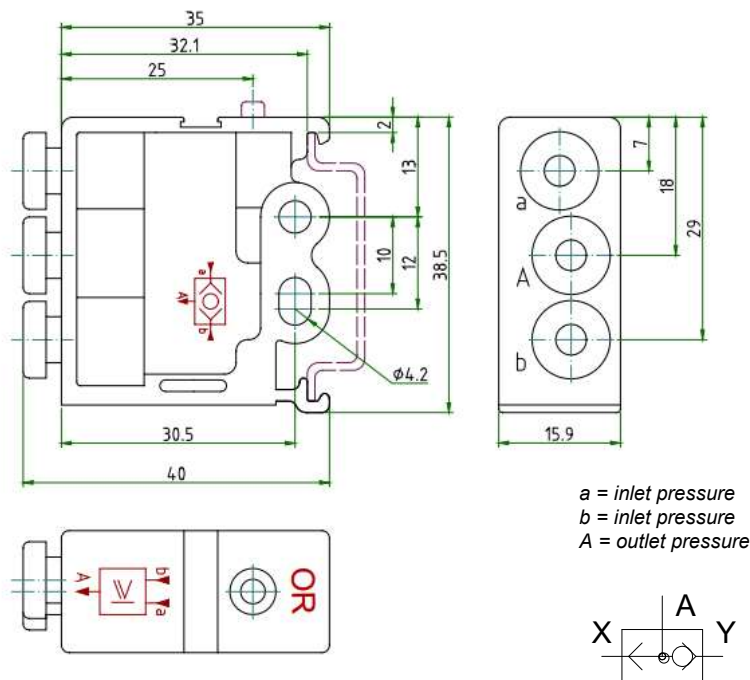
OR VALVE



\* with 4 mm tube & M5 thread

- \* Flow rate is 100 NI / min. at 6 bar .
- \* Pressure range is from 1,5 bar to 8 bar.
- \* Technopolimer body.
- \* Pressure indicator with yellow color
- \* With 4 mm tube fittings or M5 thread
- \* Suitable for non oily applications

DRAWINGS



ORDERING CODE for a VALVE

OR VALVE with 4 mm tube or M5 thread

: SMVLJ0400T00VY

\* For M5 threaded valve , please ask for the code .

Fluid	: Compressed filtered air with or without lubrication If lubrication used at ones must be continious .
Pressure range	: min.1,5 bar - max. 8 bar
Temperature range	: - 10 ° C / + 50 ° C
Version	: OR GATE with 4 mm tube fittings ( M5 threaded on request )
Materials	
Spring	: No spring inside
Silencer	: Sintered bronze
Seals	: Perbunan NBR
Body	: Pom
Orifice	: 2,7 mm
Mounting	: In any position ( suitable to rail according to DIN 50022 )
Flow rate	: 100 NI/ min at 6 bar

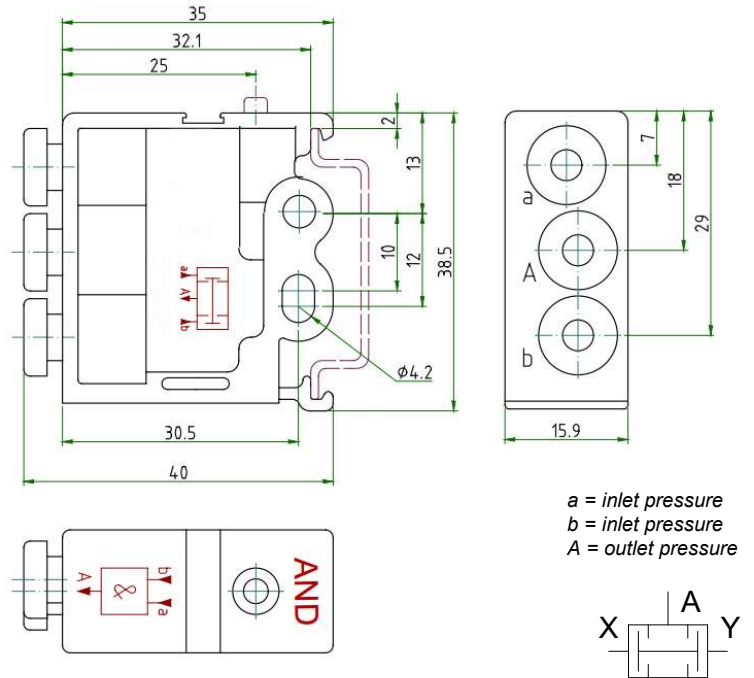
**AND VALVE**



\* with 4 mm tube & M5 thread

- \* Flow rate is 100 NI / min. at 6 bar .
- \* Pressure range is from 1,5 bar to 8 bar.
- \* Technopolimer body.
- \* Pressure indicator with yellow color
- \* With 4 mm tube fittings or M5 thread
- \* Suitable for non oily applications

**DRAWINGS**



**ORDERING CODE for a VALVE**

AND VALVE with 4 mm tube or M5 thread

: SMVLJ0400T00VE

\* For M5 threaded valve , please ask for the code .

Fluid	: Compressed filtered air with or without lubrication
	If lubrication used at ones must be continious .
Pressure range	: min.1,5 bar - max. 8 bar
Temperature range	: - 10 ° C / + 50 ° C
Version	: AND GATE with 4 mm tube fittings ( M5 threaded on request )
Materials	
Spring	: No spring inside
Silencer	: Sintered bronze
Seals	: Perbunan NBR
Body	: Pom
Orifice	: 2,7 mm
Mounting	: In any position ( suitable to rail according to DIN 50022 )
Flow rate	: 100 NI/ min at 6 bar

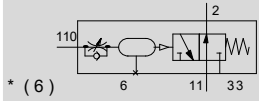
PNEUMATIC TIMER 3/2 - N.C. & N.O.



- \* Flow rate is 100 NI / min. at 6 bar .
- \* Pressure range is from 3 bar to 8 bar.
- \* Technopolimer body.
- \* Pressure indicator with yellow color
- \* With 4 mm tube fittings or M5 thread
- \* Suitable for non oily applications

For N.O. application

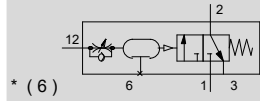
- a ( 33 ) exhaust
- b ( 11 ) inlet pressure
- A ( 2 ) outlet pressure
- x ( 110 ) signal



\* ( 6 )

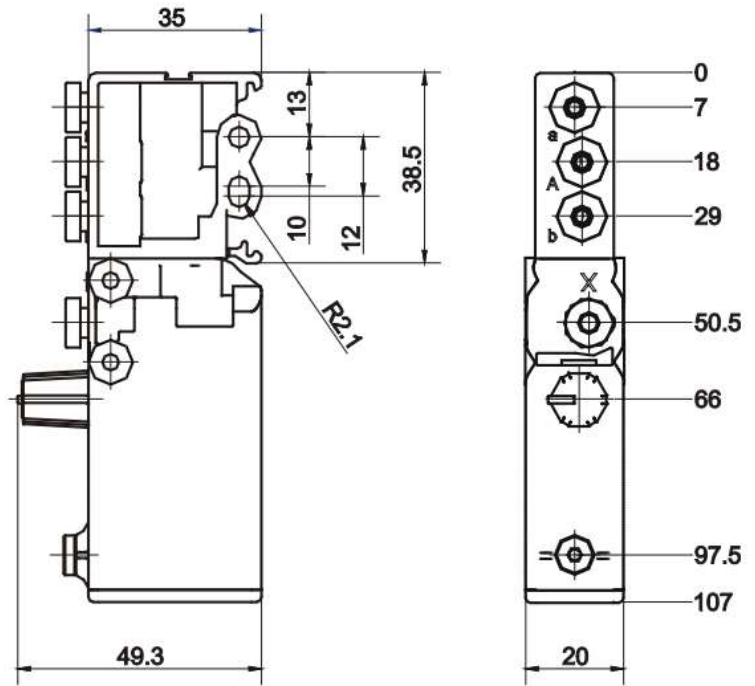
For N.C. application

- a ( 1 ) inlet pressure
- b ( 3 ) exhaust
- A ( 2 ) outlet pressure
- x ( 12 ) signal



\* ( 6 )

DRAWINGS



ORDERING CODE for a VALVE

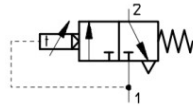
PNEUMATIC TIMER 3/2 – 4 mm or M5 N.C. & N.O. : SMVLJ0400T00T1

\* For M5 threaded valve , please ask for the code .

\* Connect external tank for increasing the time delay , via unscrew the plug ( 6 )

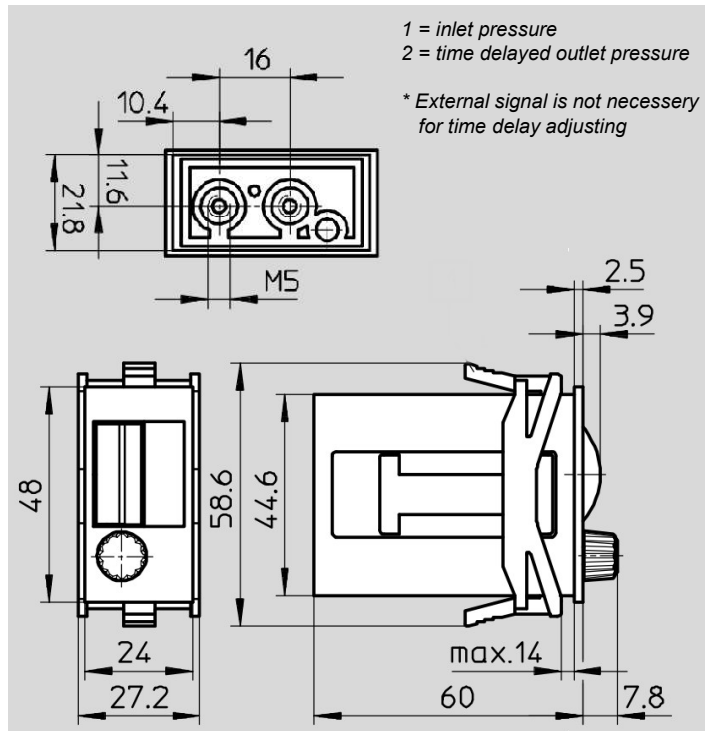
Fluid	: Compressed filtered air without lubrication 20 µm filtered and non lubricated air highly recommended
Pressure range	: min.3 bar - max. 8 bar
Temperature range	: - 10 ° C / + 50 ° C
Version	: 3/2 – 4 mm N.C. and N.O. in the same body ( M5 threaded on request )
Materials	
Spring	: Stainles steel
Adjusting knob	: From 0 to 30 sec.
Seals	: Perbunan NBR
Body	: Pom
Orifice	: 2,7 mm
Mounting	: In any position ( suitable to rail according to DIN 50022 )
Flow rate	: 100 NI/ min at 6 bar
Cycle per min.	: Max. 30 sec. ( can be increased via dissasembling the plug and connecting an additional pressure tank )
Weight	: 75 gr.

**PRECISE PNEUMATIC TIMER 3/2 - N.C.**



- \* Precise pneumatic timer with 3/2 n.c. valve.
- \* Max working pressure is 6 bar .
- \* Technopolimer body
- \* Minimum working pressure is 2 bar
- \* M5 connection ports
- \* Suitable only for NON OILY applications

**DRAWING**



The timer switches through the input port pressure applied to port 1 to 2 after the set delay time has expired .

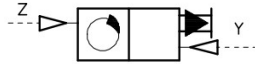
**ORDERING CODE for a VALVE**

PRECISE PNEUMATIC TIMER 3/2 M5 ( 0,2 – 3 sec. ) : SMVLJ0400T00VY

Fluid	: Compressed filtered air without lubrication 20 µm filtered and non lubricated air highly recommended
Pressure range	: min. 2 bar - max. 6 bar
Temperature range	: - 10 ° C / + 50 ° C
Version	: 3/2 – M5 N.C.
Connections	: P ( 1 ) & A ( 2 ) M5 threaded
Switch on / off pressure	: ≥ 1.6 / ≤ 0.1
Adjustible time delay	: 0,2 sec. - 3 sec.
Repetition accurasy	: + / - 0,1 sec.
Pause duration for reset	: ≥ 200 msec.
Protection class	: IP 40
Mounting	: Suitable for panel mounting
Adjusting knob	: Manualy
Working system	: Mechanically sequencing
weight	: 70 gr.

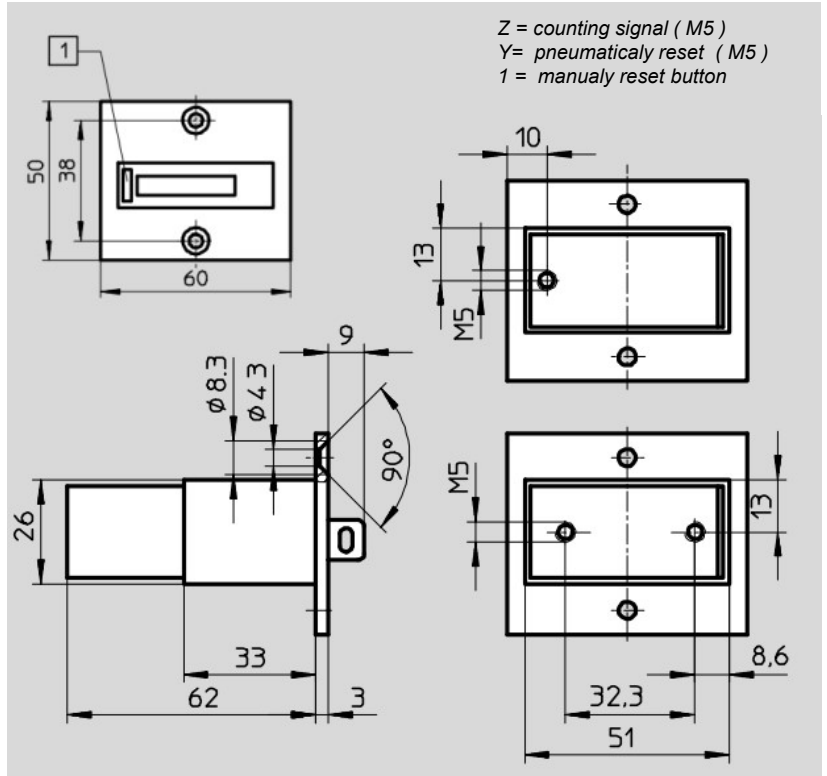


**PANEL MOUNTED COUNTER**



\* with pneumatically and manually reset

**DRAWING**



- \* 6 digit pneumatic counter
- \* Reset with manual button and pneumatic signal .
- \* Technopolimer body ..
- \* Working pressure is from 2 bar to 8 bar
- \* Pressure and reset ports are M5 threaded
- \* Suitable for NON OILY applications

Adding counter has 6 digit displays and count upwards . When the counter is reset manually or with pneumatic signal ,the figure 000000 appears .

**ORDERING CODE for a VALVE**

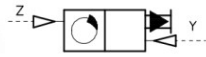
6 DIGIT PANEL MOUNTED COUNTER

: SMVLJM500T6PSA

Fluid	: Compressed filtered air without lubrication 20 µm filtered and non lubricated air highly recommended
Pressure range	: min.2 bar - max. 8 bar
Temperature range	: - 10 ° C / + 60 ° C
Responce pressure	: Count ≥ 0,8 / Reset 2 bar
Release pressure	: Count ≤ 0,15 / Reset ≤ 0,15 bar
Min. Pulse duration	: Count 8 ms. / Reset 150 ms
Min. Pause duration	: Count 10 ms. / Reset 50 ms
Digit number	: 6 digit
Life time ( mechanically )	: 30 million pulse
Count frequency max.	: 25 hz.
Min. pulse length	: 8 ms.
Protection class	: IP 40
Counting system	: Totalazing
Weight	: 75 gr.

# PNEUMATIC COUNTER SURFACE MOUNTED

## SURFACE MOUNTED COUNTER

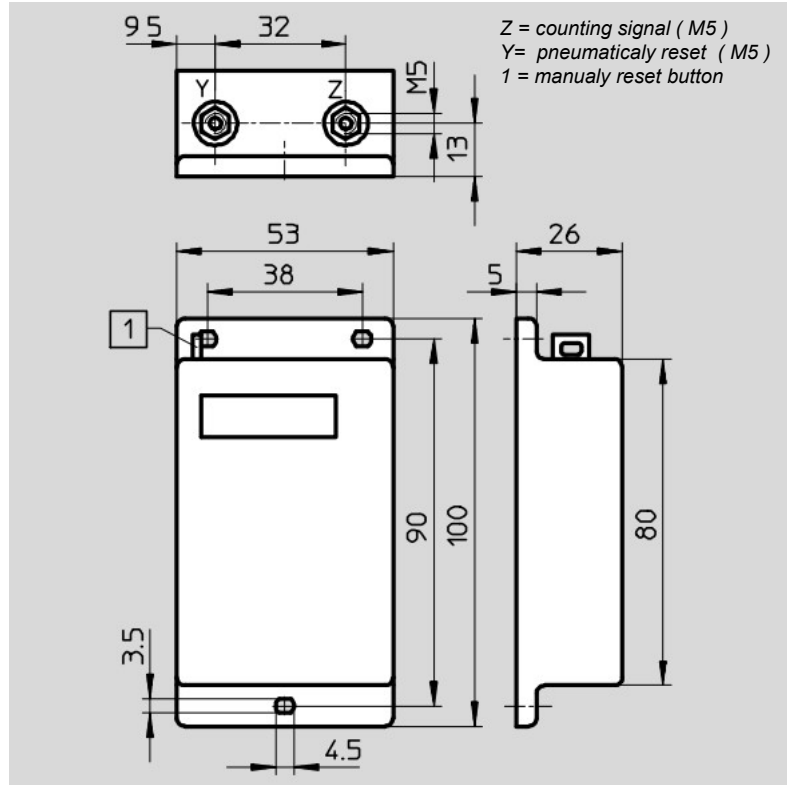


\* with pneumatically and manually reset

- \* 6 digit pneumatic counter
- \* Reset with manual button and pneumatic signal .
- \* Technopolimer body ..
- \* Working pressure is from 2 bar to 8 bar
- \* Can be overloaded thill to the 12 bar
- \* Suitable for NON OILY applications

Adding counter has 6 digit displays and count upwards . When the counter is reset manually or with pneumatic signal ,the figure 000000 appears .

## DRAWING



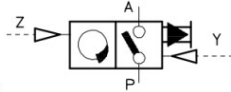
ORDERING CODE for a VALVE

6 DIGIT SURFACE MOUNTED COUNTER

: SMVLJM500T6YSA

Fluid	: Compressed filtered air without lubrication 20 µm filtered and non lubricated air highly recommended
Pressure range	: min.2 bar - max. 8 bar
Temperature range	: - 10 ° C / + 60 ° C
Responce pressure	: Count $\geq 0,8$ / Reset 2 bar
Release pressure	: Count $\leq 0,15$ / Reset $\leq 0,15$ bar
Min. Pulse duration	: Count 10 ms. / Reset 180 ms
Min. Pause duration	: Count 10 ms. / Reset 50 ms
Digit number	: 6 digit
Life time ( mechanically )	: 30 million pulse
Count frequency max.	: 25 hz.
Min. pulse length	: 8 ms.
Protection class	: IP 40
Counting system	: Totalazing
Weight	: 160 gr.

COUNTER SUBTRACTING



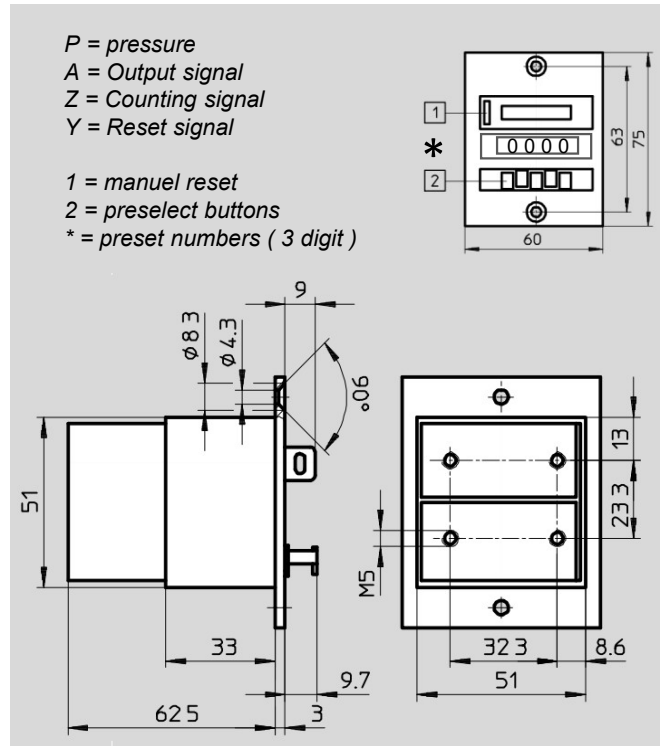
\* with pneumatically and manually reset + 3/2 n.c.

- \* 3 digit pneumatic counter
- \* Reset with manual button and pneumatic signal .
- \* With 3/2 n.c. valve possible pneumatic output.
- \* Working pressure is from 2 bar to 8 bar
- \* Can be overloaded thill to the 12 bar
- \* Suitable for NON OILY applications

This counter adds pneumatic signals from 0 to upwards and emit a pneumatic output signal when the preset number is reached.

Pre selection takes plase by pressing the white lock button and at the same time keying in the preset number . The preset number remains visible at all times in the pre selected window.

DRAWING



ORDERING CODE for a VALVE

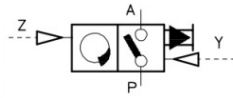
3 DIGIT COUNTER WITH 3/2 n.c. adding

: SMVLJM5ART03SA

Fluid	: Compressed filtered air without lubrication 20 µm filtered and non lubricated air highly recommended
Pressure range	: min.2 bar - max. 8 bar
Temperature range	: - 10 ° C / + 60 ° C
Responce pressure	: Count $\geq 0,8$ / Reset 2 bar
Release pressure	: Count $\leq 0,15$ / Reset $\leq 0,15$ bar
Min. Pulse duration	: Count 10 ms. / Reset 180 ms
Min. Pause duration	: Count 10 ms. / Reset 50 ms
Digit number	: 6 digit
Life time ( mechanically )	: 30 million pulse
Count frequency max.	: 25 hz.
Min. pulse length	: 8 ms.
Protection class	: IP 40
Counting system	: Totalazing
Weight	: 160 gr.

# PNEUMATIC COUNTER PREDETERMENING ( subtracting )

## COUNTER ADDING



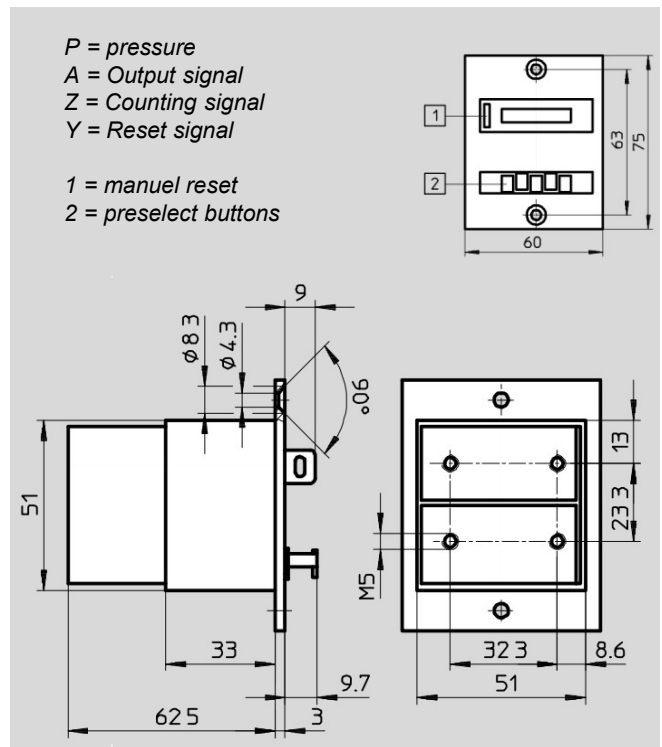
\* with pneumatically and manually reset + 3/2 n.c.

- \* 3 digit pneumatic counter
- \* Reset with manual button and pneumatic signal .
- \* With 3/2 n.c. valve possible pneumatic output.
- \* Working pressure is from 2 bar to 8 bar
- \* Can be overloaded thill to the 12 bar
- \* Suitable for NON OILY applications

This counter counts pneumatic signals backwards from a pre-set number. If zero is reached , the counter emits a pneumatic output signal. Output signal continious to be emitted until the counter is reset.

The counter is preset by pressing the reset key simultaneously keying in the preset value the Pre set number selected is retained when the counter is reset.

## DRAWINGS



### ORDERING CODE for a VALVE

3 DIGIT COUNTER WITH 3/2 n.c. subtracting

: SMVLJM5AZT03SA

Fluid	: Compressed filtered air without lubrication 20 µm filtered and non lubricated air highly recommended
Pressure range	: min.2 bar - max. 8 bar
Temperature range	: - 10 ° C / + 60 ° C
Responce pressure	: 0,4 bar – 0,8 bar
Drop - out pressure	: Drive 0,2 bar / Reset 0,15 bar
Min. Pulse duration	: Drive 10 ms. / Reset 180 ms
Min. interval duration	: Drive 15 ms. / Reset 50 ms
Digit number	: 3 digit
Resetting time	: 35 ms.
Connections	: M5 threads
Digit size	: 5 mm
Protection class	: IP 40
Counting system	: Subtracting
Weight	: 160 gr.

STROKE END POSITION SENSOR ( contactless )



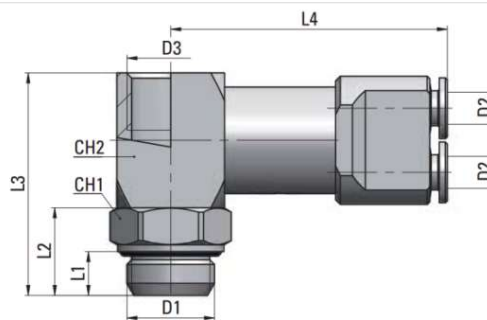
\* with 4 mm tube fittings

Threshold sensor can detect a pressure drop via command signal. For max. performance this product should be used on the inlet ports of the cylinder. When the piston rod completes its stroke, a command signal effects to the main pilot valve.

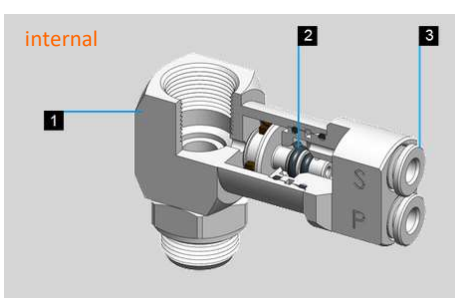
This sensor can be used only for sensing the end position of the piston rod. No intermediate positions are allowed.

Major advantage is suitability of the exproof environments and the signal occurs contactless

DRAWING



D1	D2	D3	L1	L2	L3	L4	CH1	CH2	gr.
G 1/8"	4	G 1/8"	5	11	29,5	38	13	16	69
G 1/4"	4	G 1/4"	6,5	13	33	40	16	16	79
G 3/8"	4	G 3/8"	7	13	33	42	20	20	98



- 1. BODY  
BRASS NICKEL PLATED
- 2. O - RING  
NBR
- 3. FITTINGS  
4 mm FITTINGS

ORDERING CODE for a VALVE

1/8" STROKE END POSITION SENSOR	: SMVLJ1800M4SSS
1/4" STROKE END POSITION SENSOR	: SMVLJ1400M4SSS
3/8" STROKE END POSITION SENSOR	: SMVLJ3800M4SSS

Fluid : Compressed filtered air with or without lubrication

If lubrication used at ones must be continuous .

Pressure range : min.3 bar - max. 10 bar

Temperature range : 0 ° C / + 60 ° C

Version : 3/2 N.O. Pilot valve

Materials

Body : Nickel plated brass

Threads : Hollow screw 1/8" – 1/4" – 3/8" BSPP ( parallel )

Seals : NBR

Fittings : 4 mm

Suitable hoses : 4 mm external calibrated PA – PU

Mounting : Inlet ports of the cylinder ( recommended )

\* depending upon the application , ports of the valve

Response time : On : 11 ms Off : 26 ms

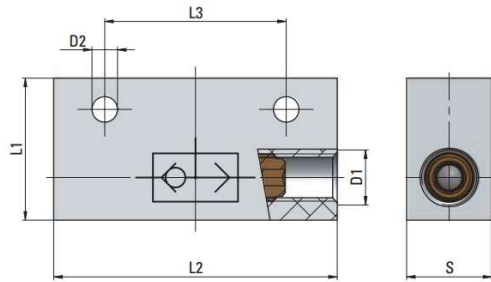
1/8" - 1/4" OR GATE



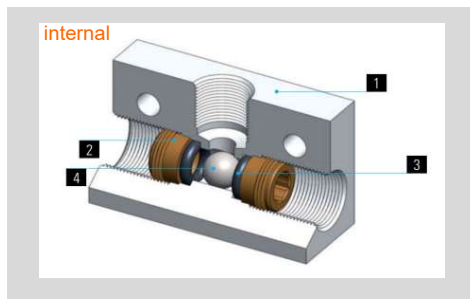
\* Aluminium body

- \* Aluminium body.
- \* Max working pressure is 10 bar .
- \* Stainless steel bowl .
- \* Minimum working pressure is 1 bar
- \* 1/8" - 1/4" ports
- \* Suitable for oily or non oily applications

DRAWINGS



D1	D2	L1	L2	L3	S	gr.
G 1/8"	4,5	25	50	32	15	46
G 1/4"	5,5	30	52	35	25	76



- 1. BODY  
ANODIZED ALUMINIUM
- 2. SUPPORT  
BRASS
- 3. SEALS  
NBR
- 4. BOWL  
STAINLESS STEEL

ORDERING CODE for a VALVE

1/8" OR GATE : SMR18M1800VEYA  
 1/4" OR GATE : SMR14M1400VEYA

Fluid : Compressed filtered air with or without lubrication

If lubrication used at ones must be continuous .

Pressure range : min.1 bar - max. 10 bar

Temperature range : - 10 ° C / + 60 ° C

Version : 1/8" or gate / 1/4" or gate

Materials

Support : Brass

Bowl : Stainless steel

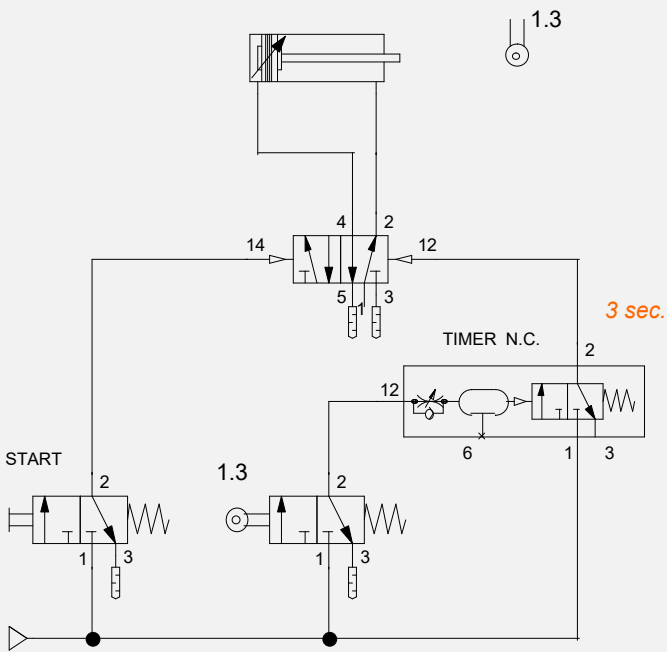
Seals : NBR

Body : Anodized aluminium

Orifice : 1/8" - 3 mm / 1/4" - 6 mm

Mounting : In any position

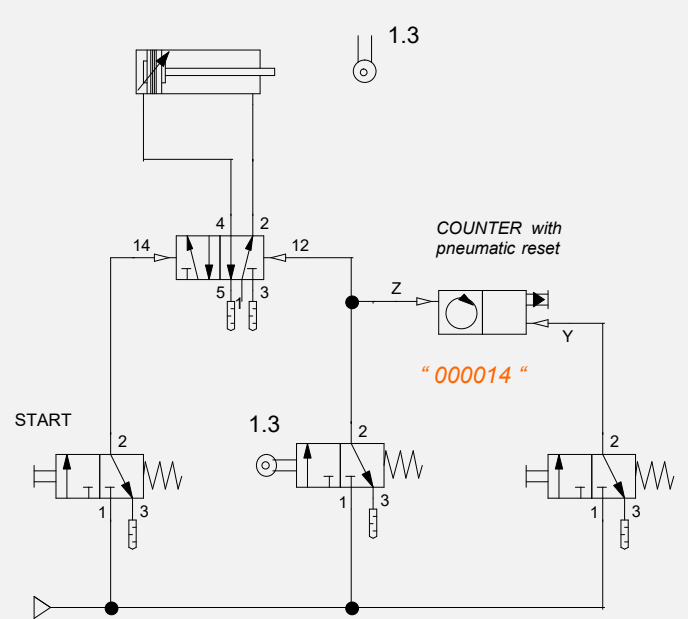
Flow rate : 1/8" 250 nl / min. 1/4" 700 nl / min.



**N.C. PNEUMATIC TIMER**

System begins to work by pressing the push button .  
When the rot of the actuator pushes to the roller lever ( 1.3 ) system stops 3 sec.

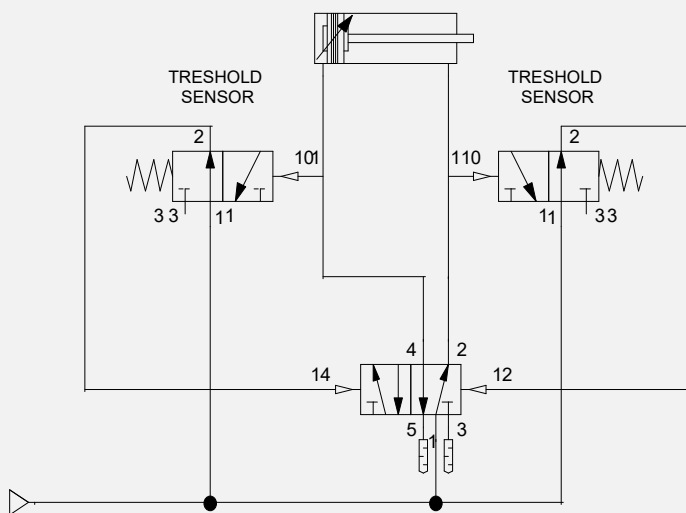
After 3 sec. actuator rot comes to it's neutral place .



**6 DIGIT COUNTER**

By pressing the start button , rot of the actuator begins to work . Counter , receives the pulses from the roller lever valve ( 1.3 ) . With that way the numbers increases on to the counter. Reset button , resets the numbers of the counter and 000000 shown on to the screen .

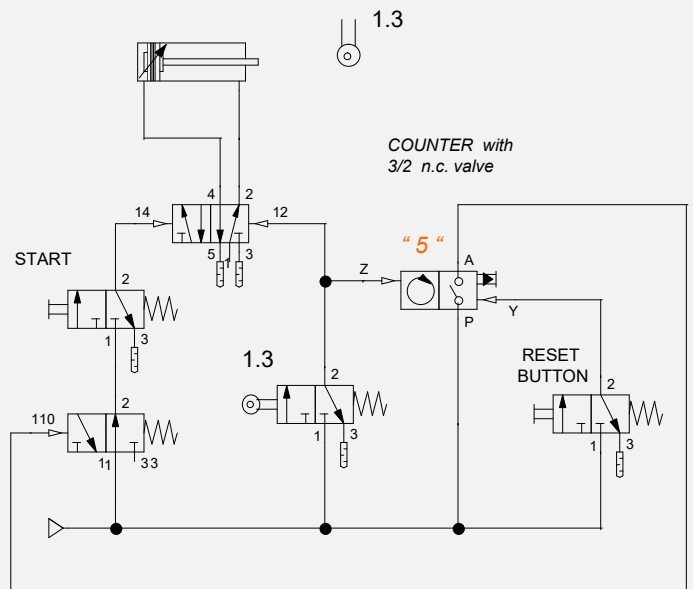
Same puls activates also the main control valve .



**TRESHOLD SENSOR**

Pneumatic cylinder works continuously when the pressured air is opened .

Roller lever valve does not needed when treshold sensor used .



**3 DIGIT COUNTER**

Because of the counter has been set to " 5 " , the system can work 5 times by pressing the start button .

After 5 times system stops .

By pressing the reset button system can work 5 times more and it stops again. Roller lever valve ( 1.3 ) gives a puls to a counter for counting .

**SEMATİK**  
LTD. ŞTİ.

DARÜLACEZE CAD. PERPA TİCARET MERKEZİ  
B BLOK KAT 11 No. 1639 OKMEYDANI / İSTANBUL  
TÜRKİYE

TEL : 0090 212 221 27 80  
Cep tel : 0090 533 747 76 94

[www.sematik.tr](http://www.sematik.tr)  
[sematik@sematik.tr](mailto:sematik@sematik.tr)

TEMMUZ 2025 / JULY 2025